

Senior Architect with over ten years of experience, strong creative and technical skills, and a passion and appreciation for design and detail. I have a keen interest in sustainability and circularity and am one of the [GlassPass](#) co-founders - spearheading a platform providing an effective tracking, sorting and separation solution for construction glass in order to enable it to be circled back into production. I have international experience in the UK, Europe, and Asia, and have gained valuable experience working in the cutting edge and internationally renowned company AEDAS.

I possess excellent team management, communication and leadership skills gained through working in multidisciplinary projects. I design, run, and deliver high quality projects on time and within budget, and have a comprehensive knowledge of building standards and regulations.

I have worked in multiple sectors including hospitality, education, residential, civics & culture, sports & leisure, and industrial - and have experience working across different project phases - from design concept, to design development, planning, tender, construction and detailing.

I easily adapt to various team roles in order to provide a quick and effective response to any design requirement and possess excellent interpersonal skills, to build and develop key relationships at all levels, including colleagues, clients and consultants.

Work experience

Michael Spark Associates LLP | February 2016 - present | London, UK

www.msa-architects.co.uk

Senior Architect

Designed, managed, and delivered from concept to completion single and multi-unit developments with ancillary offices.

Worked closely with our clients and main contractors, providing the optimal design solution supporting our clients' vision, and liaised with all stakeholders to communicate the design intent, and streamline the design process.

Successfully led a team including a senior architect, and an architect, through a succession of highly time constraint deadlines, and reviewed and coordinated the design information made available throughout the design team.

Omega Park

Single speculative industrial unit with ancillary offices | 15,500m² | 2021 | Warrington | Tender; Preliminary Construction

Central Park

Single speculative industrial unit with ancillary offices | 17,700m² | 2021 | Trafford | Construction

Bardon II, Unit 2

Single industrial unit & office fit-out | 33,500m² | 2020-2021 | Leicestershire | Preliminary Construction; Construction

Former Guardian Site

Single speculative industrial unit with ancillary offices | 14,000m² | 2019-2020 | Manchester | Feasibility; Planning

Wade Road

Single speculative industrial unit with ancillary offices | 3,300m² | 2019-2021 | Basingstoke
Feasibility; Planning; Tender; Construction

Questor 80

3 speculative industrial units with ancillary offices | 7,000m² | 2018-2019 | Dartford | Tender; Construction

Ashley Road

3 speculative industrial units with ancillary offices | 15,000 m² | 2017-2018 | Uxbridge | Preliminary Construction; Construction

Haydock Lane (1)

4 speculative industrial units with ancillary offices | 26,000 m² | 2016-2018 | St. Helens | Planning; Tender

Longbridge Road

Single speculative industrial unit with ancillary offices | 6,000m² | 2016-2017 | Trafford Park, Manchester | Tender; Construction

Aedas | October 2014 - February 2016 | Macau, China

www.aedas.com

Architect

Lead consultant co-ordinating the design, construction, and delivery of premium high-end hospitality projects.

Parisian Macau (4* hotel) | 2015-2016 | Macau

Interior fit-out | 11,000m²
Congress | Ballroom | Business centre | Link bridge

St. Regis Hotel (5* hotel) | 2014-2015 | Macau

Interior fit-out
St. Regis Macau 5 star hotel [51,000m²] | St. Regis Athletic Club [1,800m²] | Iridium Spa [1,750m²] (2)
St. Regis Serviced Apartments' base build [50,000m²]

anabretes



Portuguese | 20.04.1984



www.anabretes.com



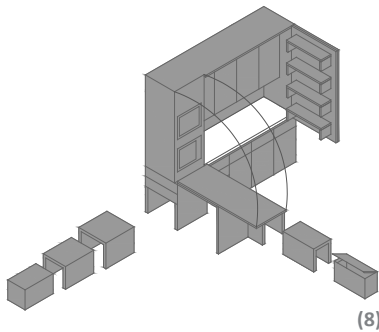
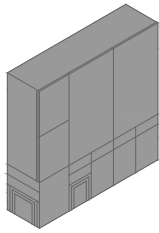
anabretes@hotmail.com



074 82 97 69 10



ARB | RIBA | Portuguese Architects Ass.



CC Office | February 2013 - September 2014 | Macau, China
ccoficemacau.com

Architect

Lead developer of high concept design studies, planning applications, tender, and construction packages for a variety of building types including hospitality, civic, education buildings, masterplans, and residential projects.

Legend Palace Hotel | 2014 | Macau | Tender; Construction
 Harbourview Hotel | 2013 | Macau | Tender; Construction
 Macau Court of First Instance | 2013 | Macau | Construction (3)
 School in Seac Pai Van - Competition | 2014 | Macau | Concept Design | In Collaboration with CPG Corporation (4)
 Kingsberg Hotel | 2013 | Macau | Design Development; Planning
 Golden Lotus - Masterplan and High End Residential | 2014 | Cambodia | Concept Design
 IPIM headquarters facade renovation | 2014 | Macau | Concept Design
 Transformer substation facade treatment | 2014 | Macau | Concept Design
 Trade Fair pavilions | 2013 | China | Concept Design
 Hengquin Hotel and villas | 2013 | China | Concept Design (5)
 The Reef - Casino, hotel, retail and leisure complex | 2013 | Philippines | Concept Design (6)

Freelance | Author | 2010-2012 | Portugal

Collaborated with multiple architects on a wide range of building types, including housing rehabilitation and extension, exhibition spaces, occupational centres. Worked across project phases from concept design to construction.

Reuse & extension of a traditional shale house | 2012 | Portugal | Concept Design; Design Development; Planning
 FC House | 2011 | Portugal | Concept Design; Planning; Construction
 Environmental Centre | 2010 | Portugal | Concept Design; Design Development; Planning | www.criativos.pt (7)
 Adaptive reuse of shale cottages in aldeias do xisto | 2010 | Portugal | Concept Design; Design Development (8)
 Occupational Centre & residences for disabled people | 2010 | Portugal | Preliminary Construction, Construction
arquitectojoaomonteiro.blogspot.com (9)

Inplenitus, Arquitectura e Soluções, Lda | December 2007- February 2010 | Coimbra, Portugal
www.inplenitus.pt | www.inplenitus.com.br

Architect

Responsible for concept design studies, competition entries, tender and construction packages for hospitality, education, leisure and sports facilities.

Bemposta High School | 2010 | Portugal | Design development; Tender; Construction
 Duecitània Hotel | 2009 | Portugal | Design development; Tender; Construction
 Lagoa Youth Hostel | 2009 | Portugal | Tender; Construction
 Urban Riverside Requalification | 2008 | Portugal | Design development; Tender; Construction
 Moimenta da Beira School | 2008 | Portugal | Design development; Tender; Construction
 Afonso de Paiva School | 2008 | Portugal | Design development; Tender; Construction (10)
 Pinhel Public Swimming Pool | 2008 | Portugal | Concept design; Competition (11)
 Miranda do Corvo School | 2007 | Portugal | Design development; Tender; Construction

Architecture Competitions & Research Projects

RIBA's [REfabricate](#) alumni and [GlassPass](#) co-founder | 2020
 International Architecture Competition "Construction Container Facelift" | 2017 | **Honourable Mention**
 12th Festival des Architectures Vives | Montpellier | 2017
 International Architecture Competition "A house in Luanda: patio and pavilion" | 2010 (12)

IT Skills

Autodesk Autocad | **Expert**
 Revit (Autodesk Revit Architecture Certified User) | **Advanced**
 Adobe Photoshop | **Advanced**
 Adobe Indesign | **Advanced**
 Microsoft Office | **Advanced**
 Archicad | **Good**

Education

Biophilic Design Blueprint | UGREEN | 20hr | Online | 2021
 Sustainable Interior Design Week | UGREEN | 10hr | Online | 2021
 Sustainable Architecture Week | UGREEN | 10hr | Online | 2021
 Sustainable Construction and Development | CIBA and London South Bank University | 10hr | Online | 2020
 Advanced Studies course in Architectural Heritage | FAUP | Porto, Portugal | 2011/2012 **15/20**
 BA (Hons) in Architecture | Darq FCTUC | Coimbra, Portugal | 2001/2002 - 2006/2007 **16/20**

Language

Portuguese | Mother tongue
 English | Fluent
 French | Intermediate
 Spanish | Intermediate